

## Item Name Rat Tissue Blot I

**Cat#** RNPB-1581

**Size:** 1 blot

**Samples** Rat Normal Tissue (brain, colon, heart, kidney, liver, lung, pancreas, spleen)  
**Up to 8 custom samples can be run on a single blot**

**Protein Load:** 15 ug total protein per lane

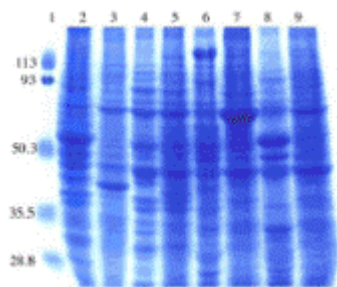
**Gel type** 4-20 % SDS-APGE Gradient gel (reducing) or Customized upon request

**Mol wt markers** 4-200 Kda (specified on the membrane)

**Membrane type** Nitrocellulose

**Blocking None:** Appropriate blocking agents (5% BSA or milk or other buffer should be used)

**Store** at 4oC in supplied bag



### Description

Coomassie blue staining of rat tissue lysates in 10% SDS-PAGE. Lanes: 1, protein markers; 2, brain; 3, colon; 4, heart; 5, kidney; 6, liver; 7, lung; 8, pancreas; and 9, spleen.

### Recommended Usage

Rat Tissue Blot I is provided for Western Blot analysis. Before use in conventional immunoblotting assays, these blots need to be re-hydrated using any standard nitrocellulose membrane re-hydration procedure. For Western Blot, the blot can be blocked with 1% BSA or 5% nonfat dry milk for 1 hour. Incubation takes 30 minutes to two hours with primary antibody, and 30 minutes to one hour with secondary antibody at room temperature.

Blots may re-stripped with Western blot recycling kit # 901000 and probed with control antibodies (beta-actin, GAPDH) or other primary antibodies.

**Notes:** All human derived materials has been tested for HIV, hepatitis and found to be negative. Nevertheless all materials should be handled with precautions and considered hazardous. It should be used and disposed accordingly.

All items are for in vitro research use only.

### Related items

#90100	Western blot recycling kit
80200	Western blot Kit for Rabbit Primary Antibodies, Chemilum. Substrate
80201	Western blot Kit for Goat Primary Antibodies, Chemilum. Substrate
80202	Western blot Kit for Mouse Primary Antibodies, Chemilum. Substrate
80215	NuGlo ECL Substrate Kit for Western blot
80400-100	Bovine Serum Albumin (BSA, protease-free) for western (makes ~2-L buffer @5% BSA)
80400-100	Bovine Serum Albumin (BSA, protease-free) for western (makes ~2-L buffer @5% BSA)
#ACTB12-#ACTB12-M	Mouse monoclonal anti-beta actin IgG
#G3PDH12-M	Mouse monoclonal anti-G3PDH (GAPDH)

RNPB-1581 80701S

Alpha Diagnostic Intl Inc., 6203 Woodlake Center Dr, S an Antonio, T X 7 8 24 4 , U S A;

**India Contact:**

**Life Technologies (India) Pvt. Ltd.**

306, Aggarwal City Mall, Opposite M2K Pitampura, Delhi – 110034 (INDIA). Ph: +91-11-42208000, 42208111, 42208222, Mobile: +91-9810521400 Fax: +91-11-42208444 Email: [customerservice@lifetechindia.com](mailto:customerservice@lifetechindia.com) Website: [www.lifetechindia.com](http://www.lifetechindia.com)