



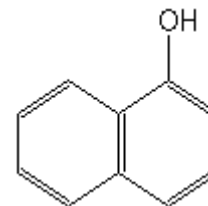
Product Information Sheet

N6179 1-Naphthol

Synonyms: α -Naphthol
CAS: 90-15-3
Formula: $C_{10}H_8O$
Mol. Weight: 144.17

Properties

Form: Powder
Appearance: White to Tan Powder
Solubility: Soluble in Ethanol
Application: Molecular Biology, Seed Testing, Histology
Storage Temp: Room Temperature
Typical Working Concentration: Varies with application, should be determined by end user.
Other Notes: Used in Molisch's Test



Application Notes

Has been used for staining or visualization of glycolipids (Benning et al. 1995) and in Molisch's test for the detection of carbohydrates (Nigam 2007). Murthy & Raghu (1990) noted that applying 1-naphthol to barley seeds stimulated seedling growth significantly.

References

- Benning C, Huang ZH, Gage DA (1995) Accumulation of a novel glycolipid and a betaine lipid in cells of *Rhodobacter sphaeroides* grown under phosphate limitation. *Arch Biochem Biophys* 317: 103–111.
- Murthy NBK and K Raghu (1990) Effect of carbaryl and 1-naphthol on seedling growth of barley, and on growth and nodulation of groundnut in two soils. *Proceedings: Plant Sciences* 100(1):11-15.
- Nigam, A. (2007) Lab Manual of Biochemistry. Tata McGraw-Hill Education, ISBN: 0070617678. Pg. 21-22.

PhytoTechnology Laboratories®

P.O. Box 12205; Shawnee Mission, KS 66282-2205

India Contact:

Life Technologies (India) Pvt. Ltd.

Ph: +91-11-42208000, 42208111, 42208222, Mobile: +91-9810521400, Fax: +91-11-42208444
Email: customerservice@lifetechindia.com Website: www.lifetechindia.com